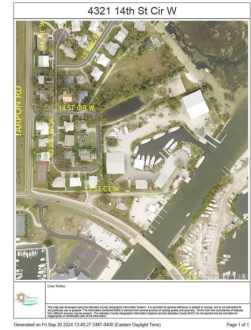




\$ 249,900



4321 14th Street Cir, Palmetto, FL 34221

- » MLS #: A4625515
- » Land | Lot: 7,579 ft²
- » More Info: 432114thStreetCir.IsForSale.com



Debbie Detweiler
 813.527.1653
deborahdetweiler@michaelsaunders.com

Michael Saunders & Company
 LICENSED REAL ESTATE BROKER

Sales Office
 4400 Manatee Avenue West
 Bradenton, FL 34209
 (941) 748-6300

Remarks

Last buildable lot in the desirable Heritage Bay subdivision on the beautiful and tranquil Snead Island. A boater's paradise close to several marinas and the Bradenton Yacht Club. As you drive over the bridge on to Snead Island, the gorgeous views of the river will take your breath away.

